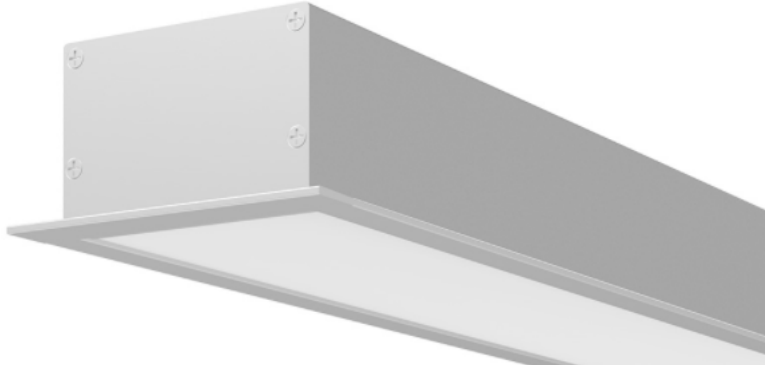




# LR2.5 Phecda R

Linear Recessed Light

2.5" | 680 lumen/ft | 32W/ft



## Specification Sheet

Project Name :

Location :

Quantity :

Date :

Note :

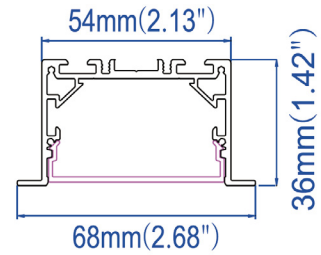
### Feature

The minimalist linear recessed design of Line collection offers a contemporary appeal and a pleasant ambient light. It is available in surface mount, Wall mount or suspended versions. The acrylic diffuser, enclosed in an extruded aluminum housing, evenly distributes the light and totally eliminates bright dots. The Line comes in a range of sizes from 4 feet and 8 feet to adapt to various ceiling areas.

### Specification

- **CRI:** 90+
- **Beam Angle:** 97°
- **IP Grade:** IP40
- **Efficiency:** 637~680lm/ft
- **Dimming:** ELV/0-10V
- **Dimming Range::** 1~100%
- **Operating Temperature:** -20°C ~ +45°C
- **Certification:** cETLus
- **Warranty:** 5 years

### Size



### Order Information

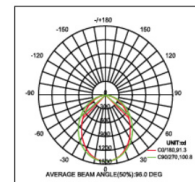
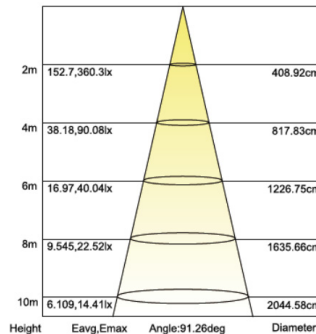
Example: LR2.5-4-30K-BK-E-EMC

Model	Length	Color Temperature	Finish	Dimming	Options
<b>LR2.5</b>					
Linear Recessed Light	<b>4</b> - 4 Feet <b>8</b> - 8 feet	<b>30K</b> - 3000K <b>35K</b> - 3500K <b>40K</b> - 4000K	<b>BK</b> - Black <b>WH</b> - White	<b>E</b> - ELV/Triac Dimming <b>V</b> - 0-10V Dimming	<b>EMC</b> - Emergency Driver

### Performance

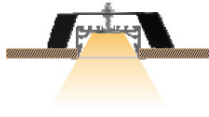
Size	CCT	Power[W]	Lumen[lm]
<b>4ft</b>	3000K	32	2548
	3500K	32	2627
	4000K	32	2706
<b>8ft</b>	3000K	64	5096
	3500K	64	5254
	4000K	64	5412

### Photometric Data



# LR2.5 Linear Recessed Light

## Installation Accessories



- N Shape clip



R5536-BI



- Rubber sucker



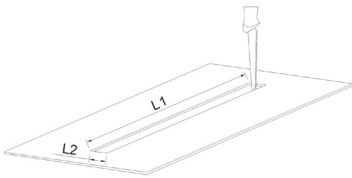
L-DA-A

## Cut Out

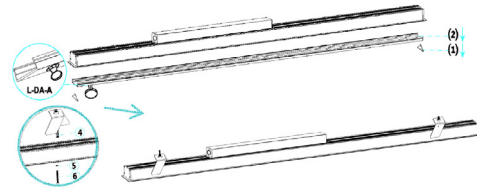
Length	Width
4' 3/8" (1229mm)	1 7/8" (47mm)
8' 3/8" (2448mm)	1 7/8" (47mm)

## Installation step

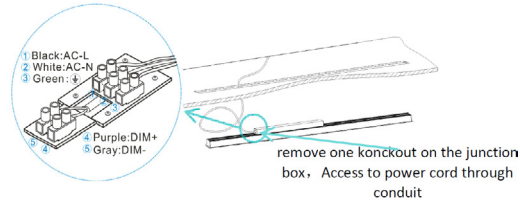
- (1) Drill installation holes and wiring hole as per scale by "L".



- (2) Remove diffuser, and then install N shape clips.

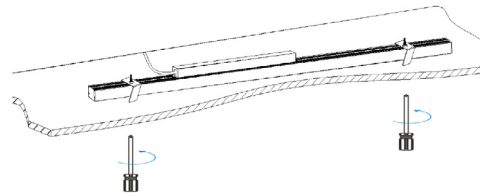


- (3) Connect the lamp input line in outlet box according to the color mark corresponding to the city electricity and dimming signal line, strain relief device need to be used before cord entry the outlet box during installation.

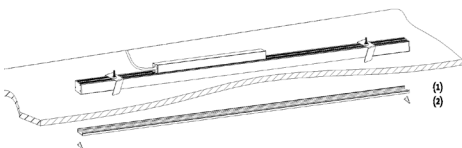


Explain: connect to 1, 2, 3 only if do not need to use dimming function, no need to connect 4, 5.

- (4) Fasten lighting fixture in the slot.



- (5) Assemble diffuser and anti-lightleak clips.



- (6) Complete installation.

