



Canister Medium T636

Integrated D-COB LED Track Light
ELV Dimmable | 2200 lumen | 20W

Specification Sheet

Product Description

T636 LED track head features a minimalist canister design to meet the functional and the aesthetic requirements for accent and task lighting. The compact size is unobtrusive and easily blends in with the ceilings. The beam spots are even in the center and smoothly fades to a soft edge, with minimal glare.

Order Information

Example: T636-20-27K-NS-H-B-HC

Model T636	Power 20	Colour Quality	Beam Angle	Adaptor
Canister Track Light	20 - 20W	27K - 2700K, CRI>90 30K - 3000K, CRI>90 35K - 3500K, CRI>90 40K - 4000K, CRI>90	NS - Narrow Spot SP - Spot FD - Flood WF - Wide Flood ZM - Zoom 15°-60°	H - Halo J - Juno L - Lightolier G - Global
Finish	Accessory			
B - Black W - White S - Silver	HC - Honeycomb Louver			

Project Name :

Location :

Quantity :

Date :

Note :



Features

Light Engine:

High-performance D-COB (Driver and COB on board) LED module provides chromaticity consistency within a 3-step MacAdam Ellipse.

Optics:

Polycarbonate total internal reflection (TIR) lenses provide precise beam shapes with minimal glare and spill and light scallops.

Housing:

Electrostatically powder coated cold-forged engine grade high purity aluminum.

Solid State Driver:

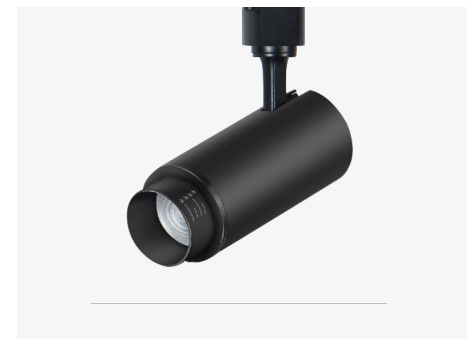
The solid-state onboard linear driver IC eliminates the need for an electrolytic capacitor and thus increases the lifespan.

Mounting:

Available in "H", "J", "L" and "G" type connectors that allow for 345° rotation and 90° tilt.

Specification

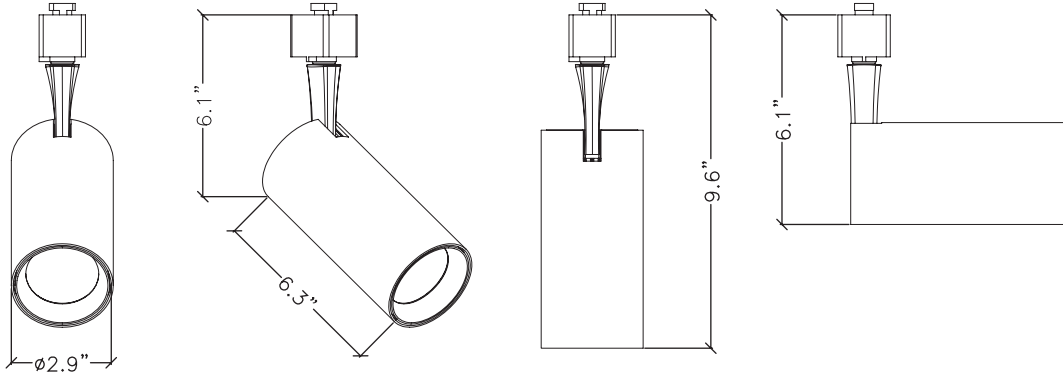
Total lumen output max: 2200 lm
Delivered lumen max: 1500 lm
Track connector: "H"/"J"/"L"/"G"
Power consumption: 21.2W @ 120V
Dimming: TRIAC, ELV
Power factor: >0.9
Input voltage: 120V, 60Hz
Approved locations: IP20, Dry
Lumen maintenance: 70% @ 60,000 Hrs
Tilt: 90°
Rotate: 350°
THD <20%
Certification: cETLus
Warranty: 5 years limited warranty



ZM -Zoom 18°-60°

Canister Medium T636 Integrated D-COB LED Track Light

Dimensions

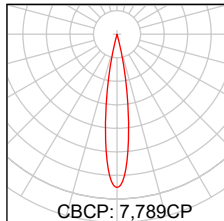


Photometric Data for 3000K

Narrow Spot

D (ft)	fc	1355 lumens	\varnothing (in)
3	864		11
6	216		21
9	96		32
12	54		42
15	34		53

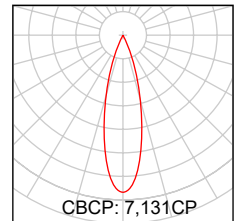
17°



Spot

D (ft)	fc	1468 lumens	\varnothing (in)
3	792		15
6	197		30
9	88		45
12	49		59
15	32		74

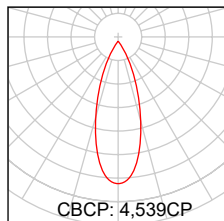
24°



Flood

D (ft)	fc	1432 lumens	\varnothing (in)
3	504		23
6	126		46
9	56		69
12	31		93
15	20		116

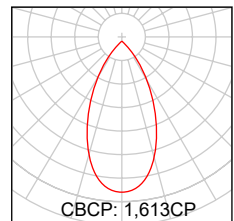
35°



Wide Flood

D (ft)	fc	1319 lumens	\varnothing (in)
3	179		37
6	44		75
9	20		112
12	11		150
15	7		187

55°



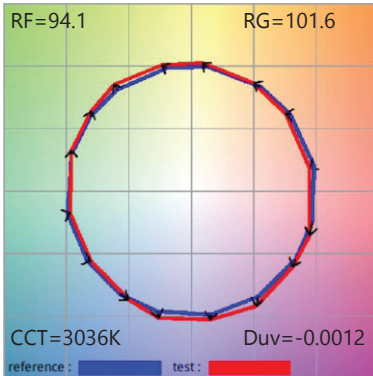
The data shown is for 3000K. Multiply FC by the following adjustment factors for other color temperatures.

Colour Temp.	2700K	3000K	3500K	4000K
Adjustment factors	0.98	1.0	1.02	1.05

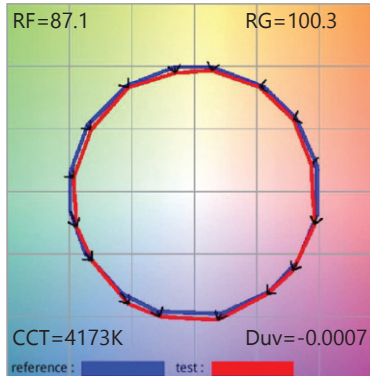
Canister Medium T636 Integrated D-COB LED Track Light

Colorimetric Data

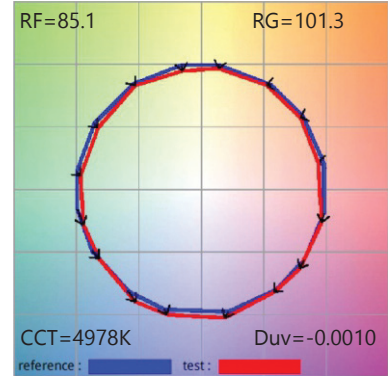
30K, CRI>90



40K, CRI>90



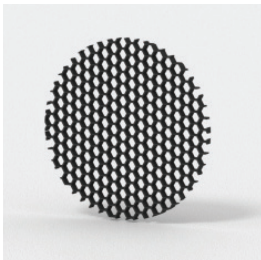
50K, CRI>90



Compatible Dimmers

Lutron®		Leviton®	Cooper®
S-603PG	SELV-300P	IPI06-1LZ	DLC03P
DVCL-153P	TG-600P	6631-2	DAL06P
DV-600P	LG-600P	VPE06	SLC03P
TGCL-153P	CT-103P	6683-IW	
S-600P	MAELV-600	6161	
DVEL-303P	FAELV-500	6633-P	

Accessory



HC - Honeycomb Louver

